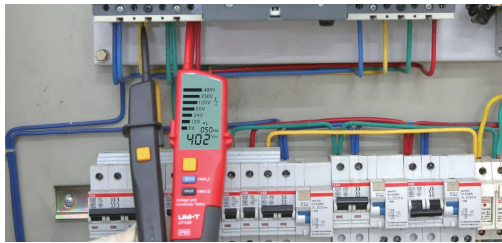


UT18 SERIES

Voltage and Continuity Testers

UT18 series are designed for testing AC/DC voltage, 3-phase voltage, phase sequence, continuity, and more. This series is categorized as CAT IV 600V and meets IP65 standard.

These voltage testers are perfect tools for electricians to quickly measure voltage levels in all environments. This series should NOT be used with 110V electrical systems.



● UT18C

● UT18D

SPECIFICATION	Range	UT18C	UT18D
Certificates	CE, RoHS, cETLus		
Voltage (V)	6V		5V±1V
	12V	8V±1V	8V±1V
	24V	18V±2V	18V±2V
	50V	38V±4V	38V±4V
	120V	94V±8V	94V±8V
	230V	180V±14V	180V±14V
	400V	325V±15V	325V±15V
Phase rotation test	690V	562V±24V	562V±24V
	57Vac~400Vac (3 phase)	√	√
Continuity test	Frequency: 50Hz~400Hz	√	√
	Resistance: 0Ω~100kΩ (+50% accuracy)	√	√
RCD test	Buzzer and LED light indication	√	√
Polarity detection	Operating voltage: 230V (50Hz~400Hz)	√	√
Self-inspection	Positive & Negative	√	√
No power test	All LED or LCD	√	√
Voltage indication	Operating voltage: 100~690V	√	—
	Exceed voltage	LED	LCD
Auto standby	Voltage range: 713V~788V	√	√
Silent mode	Standby current<10μA	√	√
Work light	All range	√	√
Low battery indication		√	√
LCD backlight	Around 2.5V	√	√
LCD display (voltage)	—	—	√
LCD display (Frequency)	6V~690V	±(1.5%+5)	±(1.5%+5)
Category ratings	40Hz~400Hz	±(3%+5)	±(3%+5)
GENERAL CHARACTERISTICS			
Power	CAT III 690V; CAT IV 600V; IP65		
Display	1.5V battery (R03)×2		
Product net weight	UT18C: 31mm x 20mm; UT18D: 73.5mm x 35.5mm		
Product size	280g		
Standard accessories	272mm x 85mm x 31mm		
Standard individual packing	Batteries, English manual		
Standard quantity per carton	Blister		
Standard carton measurement	20pcs		
Standard carton gross weight	415mm x 380mm x 365mm		
	15.9kg		

UT22B-EU

Voltage Tester



The UT22B-EU voltage tester is a simple to use tool for electricians and DIYers to measure AC/DC voltage. This voltage tester is IP54 rated, and designed to withstand a 2-meter drop. The great thing about this product is that it does not require any battery, its power is supplied by the voltage being tested! UT22B-EU can automatically distinguish between AC and DC voltage, indicated by the number of LED lights.

- Automatically detect AC/DC voltage
- Automatically indicate DC polarity (+/-)
- Hazardous voltage indicator when voltage >50V



● UT22B-EU

SPECIFICATION	Range
Certificates	CE, RoHS
Voltage indications (AC/DC)	
12V	6V-12V
24V	17V-24V
50V	35V-50V
120V	84V-120V
230V	161V-230V
400V	280V-400V
Frequency (AC)	50/60Hz
Voltage indication	LED
Auto detection of AC/DC	√
Input protection	√
Category ratings	CAT III 400V, IP54
GENERAL CHARACTERISTICS	
Power	None, powered by external source
Product net weight	136g
Product size	265mm x 42mm x 27mm
Standard accessories	English manual
Standard individual packing	Gift box
Standard quantity per carton	40pcs
Standard carton measurement	525mm x 300mm x 310mm
Standard carton gross weight	8kg